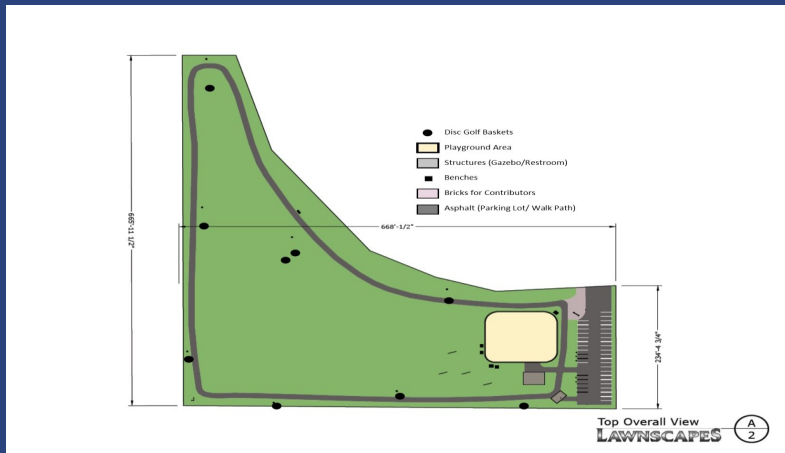


Thank You!

We sincerely appreciate your consideration in the matter of contributing to the Volunteer Park Development Project. Donations need to be made no later than May 1, 2015. Thank you!

Selah's Inclusive Park



City of Selah; Parks & Recreation
216 South 1st Street
Selah, WA 98942

Phone: 509.698.7301
Fax: 509.698.7309

E-mail: cbrown@ci.selah.wa.us



City of Selah
&
Selah Parks Foundation
Tel: 509.698.7301

What Is Volunteer Park?

- ALL - Inclusive Park
- 9 ft wide paved path
- Disc golf
- Gazebo
- Restrooms
- Parking Lot
- Playground

“Selah has always been known for being a safe, family-friendly place, and would be a great location for a children’s park. I can guarantee that the park will be put to great use-not only by my family but by the community at large.”

-Laura Richie, Selah Resident

All aspects of this park will be constructed so that an individual with a disability could use the park in the same capacity as an individual that does not have a disability.

Gift Bricks

We realize that not everyone can contribute large sums of money. There is a way to contribute to the park and have your name set in stone forever. Gift bricks can be purchased at different prices. These bricks have the name of you, your children, grandchildren, business name or logo. Bricks can be purchased online @ www.volunteerpark.donationbricks.com or by calling the Selah Parks & Recreation office.

Prices are:
\$100 for a 4x8 in. engraved brick
\$250 for an 8x8 in. engraved brick
\$500 for an 8x8 in. with logo

Total Park Cost: \$750,000
Grant Contribution: \$359,000
City Contribution: \$60,000 (grant limited)
Materials and Labor: 65,900
FUNDRAISING NEEDED: \$253,100
Any additional funds raised will be designated for future maintenance at this park

If you are not able to contribute financially we will also need volunteers to help install playground equipment as well as plant trees and other vegetation. If you know of somebody that has materials that could be donated, that would be extremely helpful as well.

Contributing

- **Monetary Donation**
Payable to:
Selah Parks Foundation
181 Heather Heights Dr.
Selah, WA 98942
- **Materials or Equipment**
Contact:
Andrew Potter - 698.7330 or
apotter@ci.selah.wa.us
- **Volunteer**
Contact:
Charlie Brown - 698.7301 or
cbrown@ci.selah.wa.us

“Yakima Valley School is home to 69 individuals with developmental disabilities who enjoy opportunities to be outdoors and participate in recreational activities.”

-Jill McPherson,
Interim Superintendent

All donors to the park project will receive documentation that can be used for tax deduction purposes.



Selah Parks & Recreation Mission:

To plan, implement and develop affordable recreation services, programs and facilities to meet the present and future recreational needs of the Selah Parks & Recreation community.